

A ship to sample biodiversity in Arcachon Bay

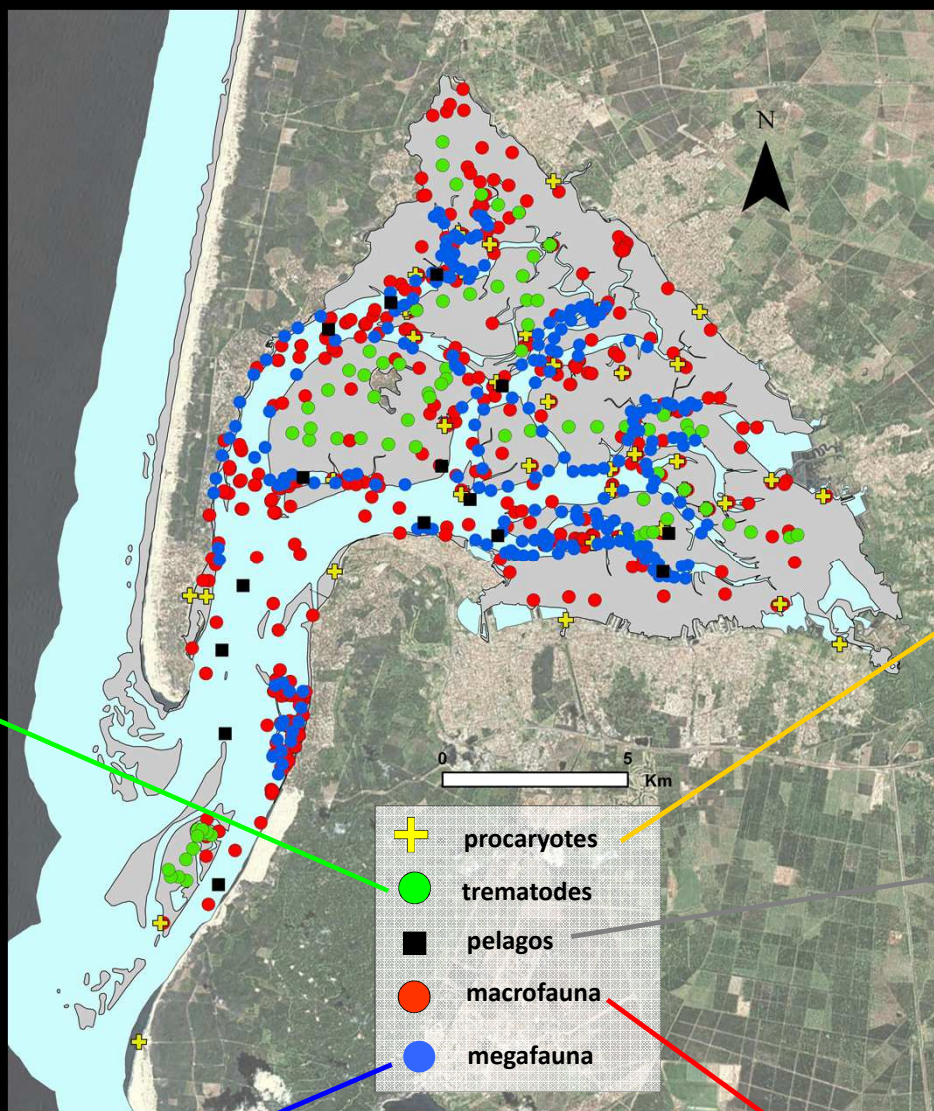
Nicolas LAVESQUE, Guy BACHELET, Guillaume BERNARD, Hugues BLANCHET, Paulo BONIFACIO, Valérie DAVID, Yolanda DEL AMO, Van Tu DO, Sophie DUBOIS, Frédéric GARABETIAN, Benoît GOULLIEUX, Antoine GRÉMARE, Florence JUDE-LEMEILLEUR, Olivier MAIRE, Cécile MASSÉ, Guillaume MEISTERHANS, Antoine NOWACZYK, René PARRA, Natalie RAYMOND, Alicia ROMERO-RAMIREZ, Benoît SAUTOUR, Jean-Claude SORBE, Xavier de MONTAUDOUIN



PLANULA 4, INSU



ECOBIOC (UMR EPOC 5805) team has a long experience in biodiversity assessment in different ecological compartments of Arcachon Bay. Indeed, its expertise covers a wide range of organisms from prokaryotes to vertebrates, including planktonic cells. Since 1980, 912 stations have been explored using appropriate gears (Niskin bottles, nets, grabs, corers, dredges), many of them from the coastal oceanographic ship Planula 4 (INSU). Most of the stations have been explored only once in the framework of regional (OSQUAR, AAMP), national (LITEAU, PNEC) or international (CLEAN, Vietnam and Portuguese cooperation) projects. More recently (> 2000), several sites were sampled for impact study purpose (SIBA, SOGREAH). Finally, few sites are regularly monitored with different projects like SOARC-SOMLIT (plankton - every other week - two stations), Moroccan Cooperation (trematodes - every month - one station), Diversity platform (seagrass megafauna - every year - 6 stations), WFD (macrozoobenthos - every other year - 2 stations).



Some convenient links:

RESOMAR (<http://www.epoc.u-bordeaux.fr/index.php?lang=fr&page=resomar>)

SOMLIT (<http://somlit.epoc.u-bordeaux1.fr/fr/>)

RRLA (<http://rrla.epoc.u-bordeaux1.fr/>)

INSU (<http://www.insu.cnrs.fr/>)